

# Wingless weevils in the garden

S. C. Gordon

Scottish Crop Research Institute, Invergowrie, Dundee, DD2 5DA, Scotland, UK

<http://www.scri.sari.ac.uk>

Scottish Crop  
Research Institute

## What are wingless weevils ?

Wingless weevils are a group of flightless beetles (Coleoptera) that feed on a wide range of plants.

### Vine weevil (*Otiorhynchus sulcatus*) (7-10mm).

- The most damaging weevil in horticulture.
- Very wide host range (more than 140 plant species).
- Very important in glasshouses, on fruit plants and ornamentals.
- Very common.



### Clay-coloured weevil (*O. singularis*) (6-7mm).

- More localised than vine weevil - adults damage raspberry, ornamental and fruit stocks.
- Common in Scotland.

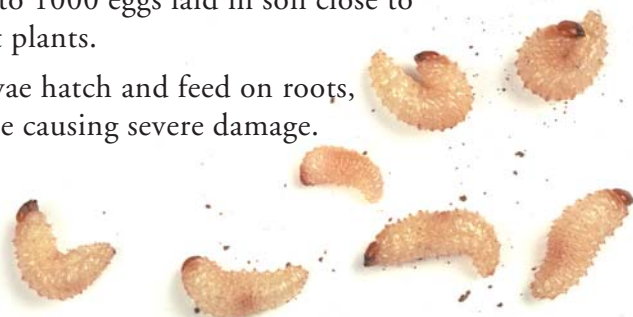
## Less common wingless weevils

- Strawberry weevil (*O. ovatus*) (4.5-5.5mm).
- Strawberry weevil (*O. rugosostriatus*) (5-7mm).
- Red-legged weevil (*O. clavipes*) (8-12mm).
- Strawberry weevil (*O. rugifrons*) (4.5-6mm).

All feed on a range of crops but are associated with strawberries.

## Life cycle

- Most are parthenogenetic (no males).
- Up to 1000 eggs laid in soil close to host plants.
- Larvae hatch and feed on roots, some causing severe damage.



- They pupate when fully fed. Adult clay-coloured weevils emerge in April/May - Vine weevils later in May/June
- Adults feed on leaves, causing characteristic notching.



## Control

### Chemical.

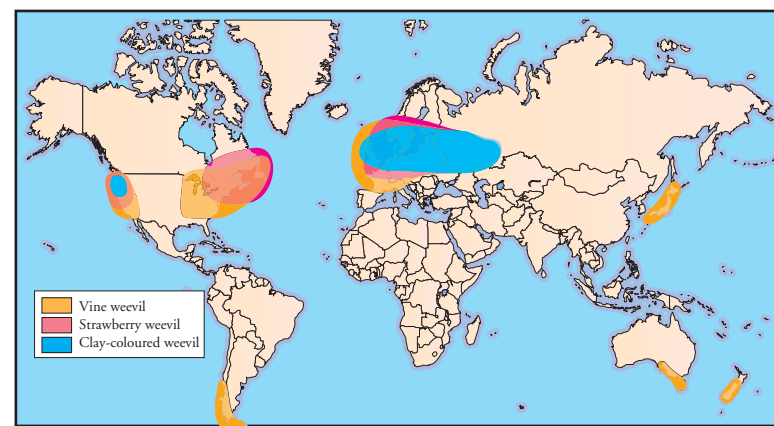
Chemical control by insecticides now difficult - most currently available products have little effect.

- Composts with added slow-release insecticides are used to give up to 2 years protection in high value horticultural plants.
- Insecticide applied as drench now available for gardener for use on non-food plants

### Natural.

- Insect-attacking fungi work in some conditions.
- Insect-attacking nematodes can be effective in warmer environments.
- Ground beetles feed on weevil eggs and larvae and help to reduce numbers.
- Chickens, Quail and game birds eat weevil adults and may reduce damage.

## Distribution worldwide



The approximate geographic distribution of the main wingless weevils.